

LEPOC ROAD, ABBEVILLE VILLAGE, SW4
GUIDE PRICE: £1,000,000 - £1,200,000



WILFORDS
LONDON

186 Northcote Rd,
London SW11 6RE
020 7361 0410

info@wilfords.com

www.wilfords.com



LEPPOC ROAD, ABBEVILLE VILLAGE, SW4

GUIDE PRICE: £1,000,000 - £1,200,000

1,288 SQ FT / 120 SQ M

3 BEDROOMS | 3 BATHROOMS | 2 RECEPTIONS | SHARE OF FREEHOLD

An immaculately presented and exceptionally spacious split level, first and second floor apartment measuring 1,288 Sq. Ft/119.7 Sq. Mtrs, which offers accommodation more commonly associated with a house.

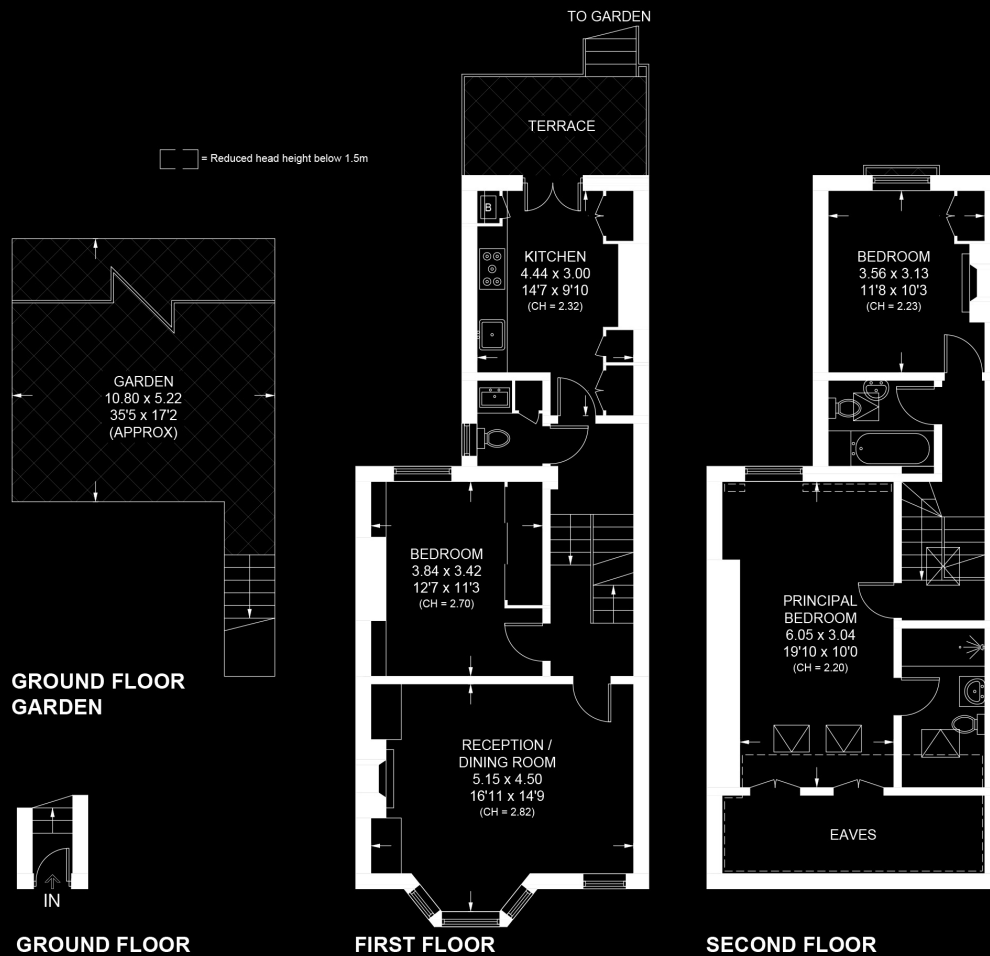
Coming with a share of the freehold and offering three genuine double bedrooms served by two bathrooms, a cloakroom/W.C./utility room, incredibly large reception room that comfortably accommodates a dining table, plus a beautifully fitted kitchen/breakfast room which leads out onto a rear terrace with stairs down to a private garden which measures an incredible 35' x 18'.

Leppoc Road being just off Abbeville Road is therefore convenient for the bespoke independent stores in Abbeville Village, plus cafés, bars and restaurants. Clapham Common itself and its Northern Line Underground Stations are within easy walking distance.

SCAN TO VIEW
THIS PROPERTY



Approximate Area = 119.7 sq m / 1288 sq ft
Including Limited Use Area / Eaves (13.0 sq m / 140 sq ft)



LEPOC ROAD, ABBEVILLE VILLAGE, SW4

Floor plan for identification purposes only - not to scale.

Misrepresentation Act 1967. This brochure and the descriptions and measurements herein do not constitute representation, and whilst every effort has been made to ensure accuracy, this cannot be guaranteed.

WILFORDS
LONDON

186 Northcote Rd,
London SW11 6RE
020 7361 0410