

BRAYBURNE AVENUE, CLAPHAM, SW4
GUIDE PRICE: £650,000 - £675,000



WILFORDS
LONDON

186 Northcote Rd,
London SW11 6RE
020 7361 0410

info@wilfords.com

www.wilfords.com



BRAYBURNE AVENUE, CLAPHAM, SW4
GUIDE PRICE: £650,000 - £675,000

898 SQ FT / 83 SQ M
2 BEDROOMS | 1 BATHROOM | 1 RECEPTION | LEASEHOLD

An incredibly light and spacious first and second floor split level apartment that measures very nearly 900 Square feet. Retaining some lovely original period features this two double bedroom home, set within an end of terrace Victorian building and within walking distance to the heart of Clapham Old Town.

This lovely flat is set in a beautifully maintained Victorian building and offers an abundance of original period features to include feature fireplaces, high ceilings and sash windows. The home is in good condition, however there is scope to further enhance it. The headline features include a bright reception room to the front with ample space for a dining table, a separate kitchen/ breakfast room, two double bedrooms, a bathroom and a separate WC.

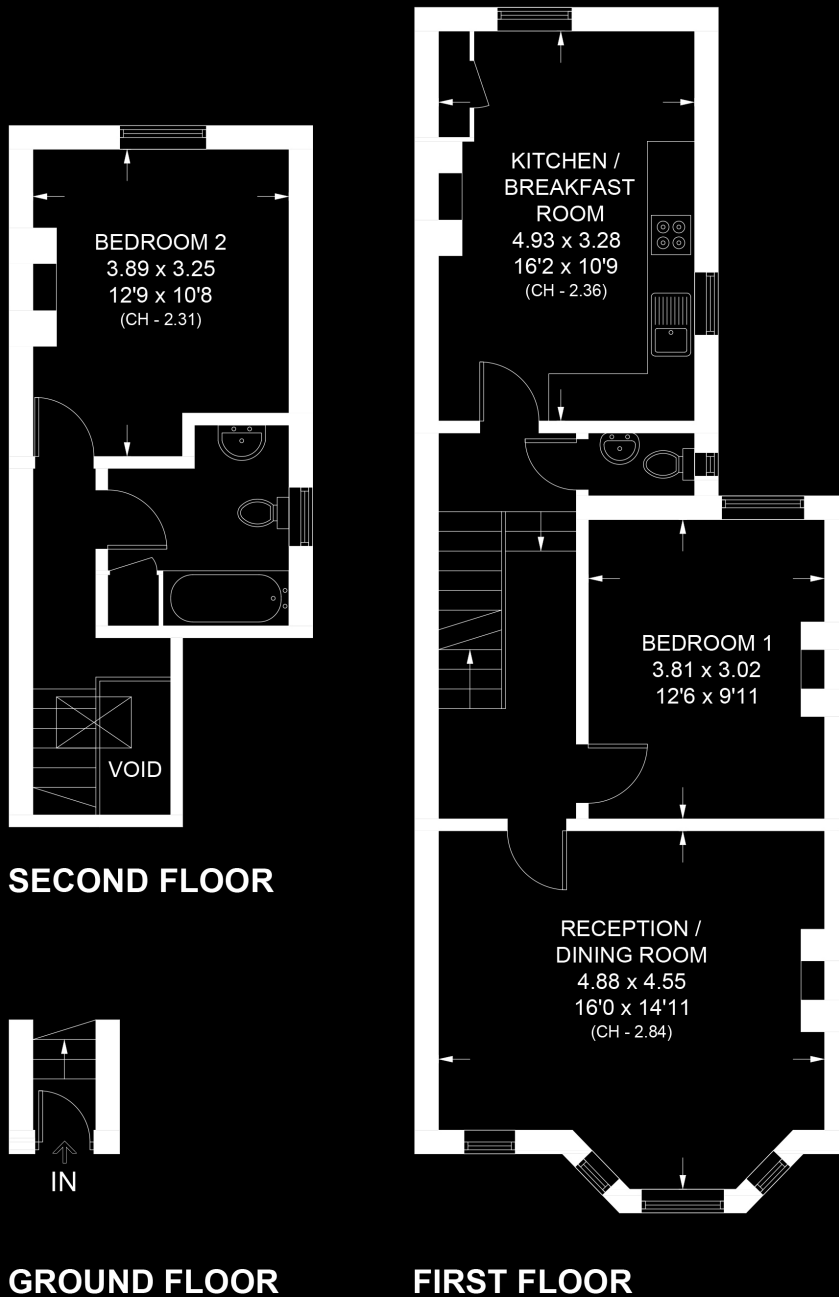
Nestled within the vibrant enclave between Clapham Old Town and Wandsworth Road this residence affords effortless access to an array of unparalleled amenities and transport links.

Unexpired lease term of 178 years, upon completion. Offered chain free.

**SCAN TO VIEW
THIS PROPERTY**



Approximate Area = 83.4 sq m / 898 sq ft
Including Limited Use Area (0.4 sq m / 4 sq ft)
(Excluding Void)



BRAYBURNE AVENUE, CLAPHAM, SW4

Floor plan for identification purposes only - not to scale.

Misrepresentation Act 1967. This brochure and the descriptions and measurements herein do not constitute representation, and whilst every effort has been made to ensure accuracy, this cannot be guaranteed.

WILFORDS
LONDON

186 Northcote Rd,
London SW11 6RE
020 7361 0410